

ESTD  
—  
DALLAS  
TEXAS

2501

MMXXIII  
—  
CEDAR  
SPRINGS







FULLY RENOVATED, CLASS A BUILDING IN  
THE HEART OF UPTOWN, DALLAS

7 Stories

110,415 RSF

3.0/1,000 garage  
parking ratio

**SUITE 700** 17,466 RSF

**SUITE 600** 17,466 RSF

**SUITE 500** 17,466 RSF

**SUITE 400** 17,466 RSF

**SUITE 300** 17,466 RSF

**SUITE 200** 13,619 RSF

**SUITE 100** 11,194 RSF

Ground Floor Restaurant  
Coming Soon



BEAUTIFULLY REDESIGNED LOBBY  
2501 CEDAR SPRINGS TRANSFORMED





EXPANSIVE & REFURBISHED OUTDOOR SPACE



FIRST-FLOOR RESTAURANT SPACE WITH EXPANSIVE OUTDOOR PATIO



AMPLE GREENSPACE



REFURBISHED EXTERIOR, PORTE-COCHÈRE, AND PARKING GARAGE







NESTED IN THE HEART OF UPTOWN WITH CITY VIEWS

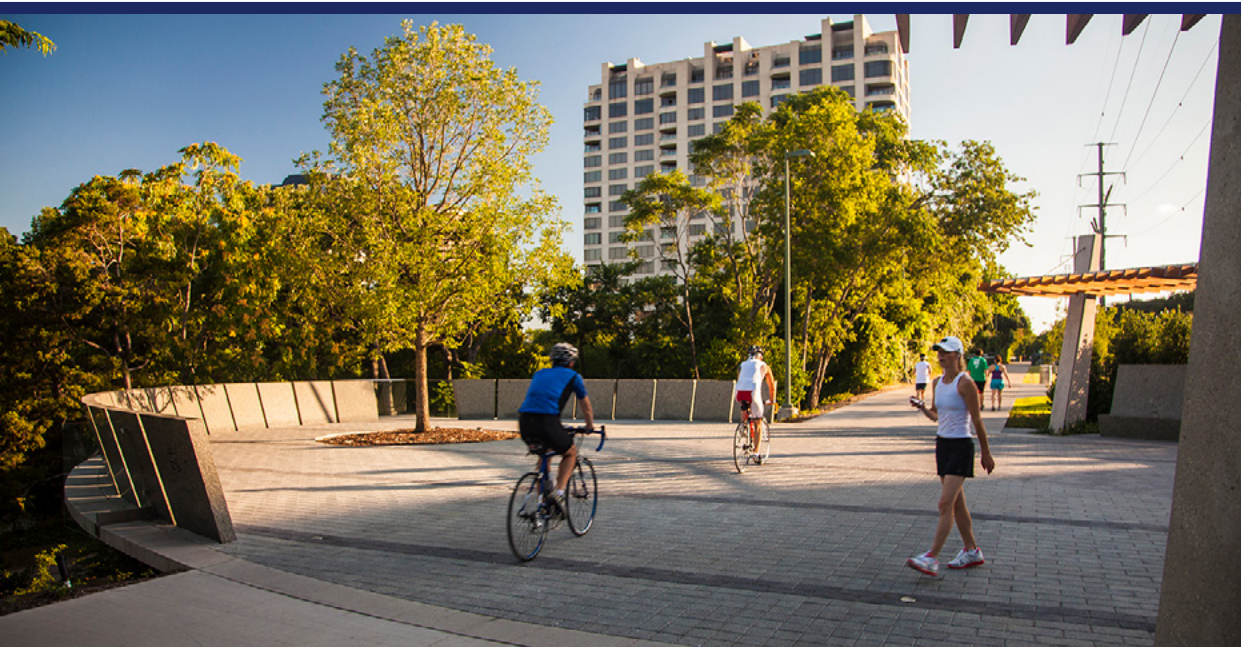




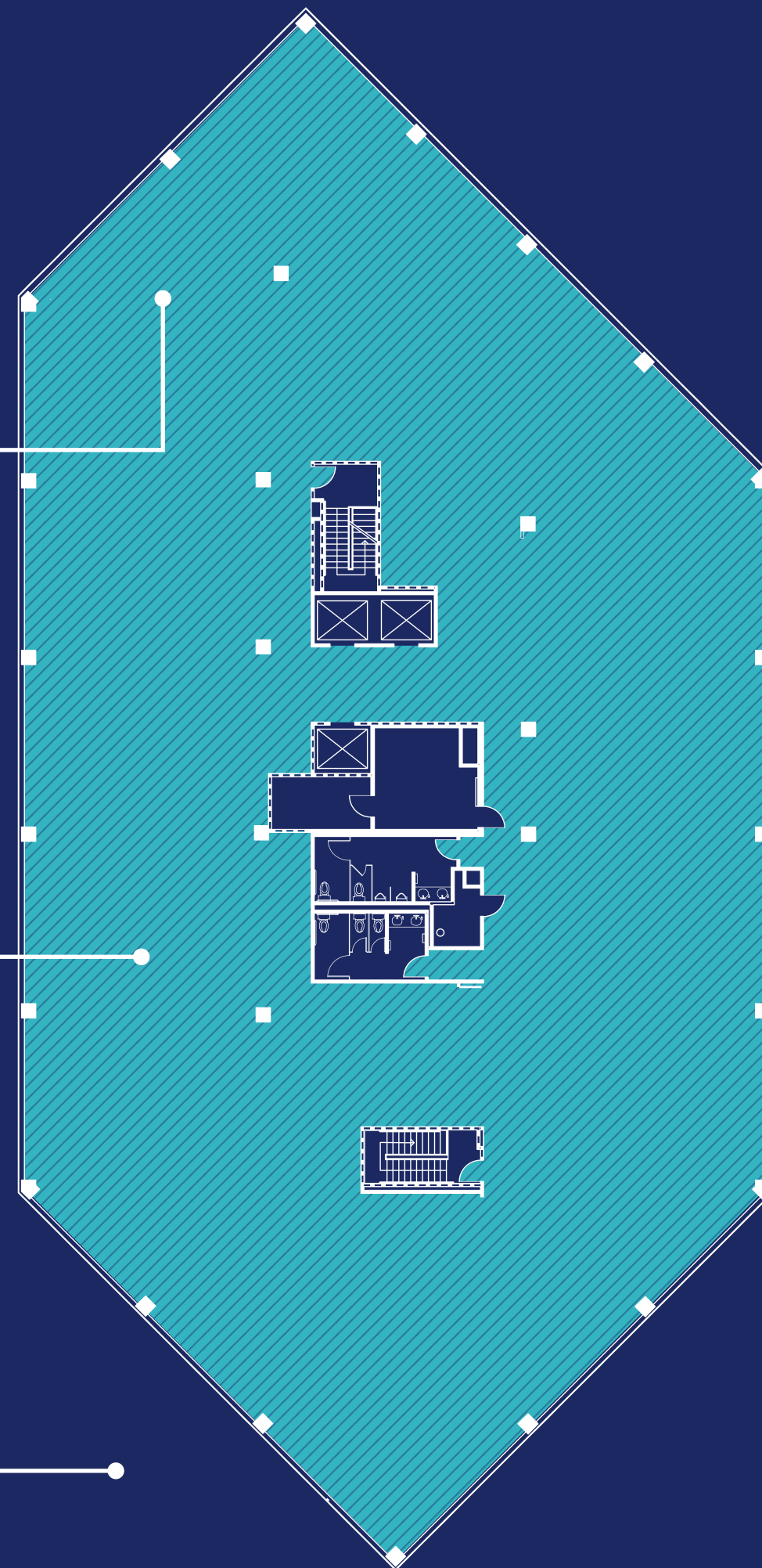
**VIEWS FROM THE 7TH FLOOR**  
360 degree urban views.



**HIGHLY EFFICIENT FLOORPLATE**  
Averaging 17,000 square feet. Designed with center core to cater to a variety of tenants.



**PRIME WALKABILITY WITHIN UPTOWN**  
Minutes away from the Katy Trail, The Crescent Hotel and the restaurants and retail on McKinney Avenue.







NICK & SAM'S



MARRIOT UPTOWN



23SPRINGS



THE STONELEIGH



THE CRESCENT



UCHI



KATY TRAIL ICE HOUSE



MAPLE TERRACE



THE QUAD





# NEWMARK

**NATHAN DURHAM**  
214.497.5015  
NATHAN.DURHAM@NMRK.COM

**NATALIE SERIO**  
214.908.2068  
NATALIE.SERIO@NMRK.COM